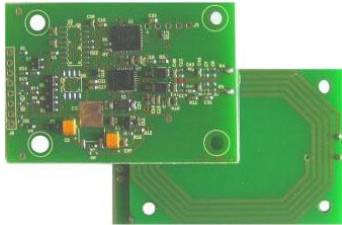




TEAM-EHIC-ISO14443A-ISO14443B 13.56MHz READER

TESSERA SANITARIA EUROPEA



TEAM-PCB



ONDA



SHELL



POCKET USB



LAN

1.0 FEATURES AND SPECIFICATIONS

The TEAM is a Front Side Serial Tag Reader with **built-in Antenna**, with three interface options TTL-RS232-RS485-LAN-USB.

TRANSPONDERS SUPPORTED:

That used by TEAM. ISO14443A/B

2.0 VERSIONS

TEAM-TTL-ABH-5-(Case)

TTL interface. Spontaneous.

TEAM-232-ABH-5-(Case)

RS232 interface. Spontaneous.

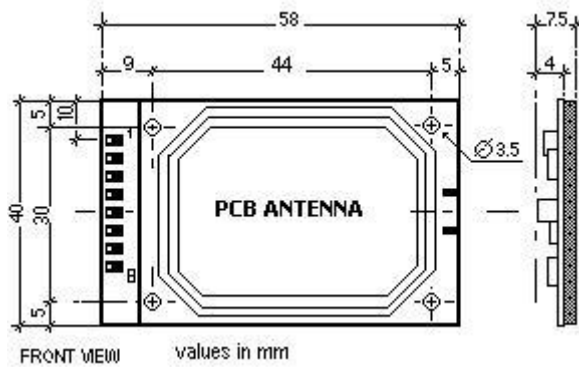
TEAM-USBN-ABH-5-(Case)

USB interface. Spontaneous. Powered by USB.

TEAM-LAN-ABH-5-(Case)

LAN interface. Spontaneous.

DIMENSIONS PCB



CONNECTION

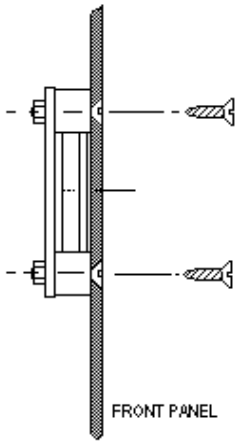
The on-board connector is an 8 pin .1" soldering type.

Pin Number	Description
1	+5VDC
2	GND
3	RX TTL input
4	TX TTL output
5	No Connect
6	No Connect
7	Out1 Open Collector output.
8	LED-OUT TTL output trough internal 1kΩ

CONNECTION RS232

Pin Number	Description
1	+5VDC
2	GND
3	RX RS232 input
4	TX RS232 output
5	No Connect
6	No Connect
7	Out1 Open Collector output.
8	LED-OUT TTL output trough internal 1kΩ

2.3 INSTALL



Due to the Radio Frequency emissions of the Reader Antenna is important to avoid the usage of metal panels in front, rear and lateral sides of the Reader.
Although the TEAM provides an high resistance to EMC corruption, avoid to install it in high RF emission environments, the reading distance may result reduced.

3.0 PROTOCOL

The reader detect two type of data.

- 1) FISCAL CODE LENGTH:16bytes
- 2) SERIAL NUMBER LENGTH:16bytes

STRING from TEAM to HOST (ASCII FORMAT)

"E" "BRMRS A02P19F205L" "U" FISCAL CODE

"E" "BRMRS A02P19F205L" "U" SERIAL NUMBER

3.2.1 STRINGS from FRW to HOST

REPLY#0 : READ

DESCRIPTION	STX	DEVICE	LENGTH	STATUS	DATAn (n=4-8)	BCC
HEX VALUE	02H	00H-7CH	06H-0AH	See below	00H to FFH	00H-FFH

FUNCTION	VALUE	DESCRIPTION
READ UID	04H	Read the 8 bytes containing the UID.
READ BLOCK	04H	Read a single BLOCK DATA0-1-2-3 (DATAn=4).

Wait for TAG extraction....

4.0 OUT1

The Out1 is an Open Collector output driving a max. load of 80 ma at 12VDC.
It will goes ON/OFF with the COMMAND#S.

4.1 LED-OUT

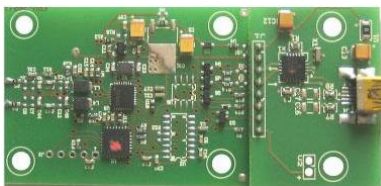
The LED-OUT is a TTL output, active high, with a 1 kΩ internal series resistor suitable to drive an external LED connected to GND.
It will turn ON when a KEY/CARD is moved in the RF-Field and is correctly read.
It will turn OFF when the KEY/CARD is removed by the RF-Field.

5.0 TEAM-USB-N-BH-5 USB2.0 modules

The TRW-USB module is powered by the 5VDC on the USB connector.

The available models for order are:

FRW-USB-N-BS/BH-5 (PCB version) and FRW-USB-N-MS/MH-5-POCKET



FRW-USB-N-Version PCB



FRW-USB-N- Version POCKET

6.0 TEAM-BH-5-ONDA and TEAM-BH-5-SHELL

Dimension SHELL	H 77 x L 112 x D 30 mm
Dimension ONDA	H 51 x L 115 x D 24 mm

CABLE PIN FUNCTION

COLOUR	TTL-232
WHITE	+5VDC
BROWN	GND
YELLOW	RX
GREEN	TX
GREY	GND



8.0 SPECIFICATIONS

OPERATING

Power Requirements	max. Ripple 10mVp-p	5 VDC \pm 5% at max 90mA (peak) 3.3 VDC \pm 5% at max 90mA (peak) only for TTL version.
Serial interface	Data = 8bit Parity = none Stop = 1bit	BS: BiNARY asynchronous half duplex, polling-selecting protocol . BH: BiNARY asynchronous half duplex, spontaneous protocol .
Baud Rate		9600 bits per second
Reading Distance (with TAG in center of RF field)		CARD: typ. 50mm
Writing Distance (with TAG in center of RF field)		CARD: typ. 50mm

MECHANICAL PCB

Dimensions	40mm x 58mm x 10 mm
Weight	Max 60g

ENVIRONMENTAL

Temperature	Operating	-10°C to 60°C
	Storage	-30°C to 70°C
Humidity	Operating	10% to 90% non condensing
	Storage	0% to 95% non condensing

```

; 0006C                ; Lunghezza complessiva campo dati
; 04 6030              ; Codice Emittitore
; 08 16072020         ; Data emissione
; 08 15072026         ; Data scadenza
; 0C DALLE FRATTE    ; Cognome
; 05 LUIGI            ; Nome
; 08 21031961         ; Data nascita
; 01 M                ; Sesso
; 00                  ; Statura
; 10 DLLLGU61C21E5140 ; Codice Fiscale
; 00                  ; Cittadinanza
; 04 E514             ; Comune di nascita
; 00                  ; Stato estero di nascita
; 00                  ; Estremi atto estero di nascita
; 04 E514             ; Comune di residenza al momento dell'emissione
; 00                  ; Indirizzo di residenza
; 00                  ; Eventuale annotazione in caso di non validità del documento per l'espatrio
-----
; 00068
; 04 6030
; 08 21032016
; 08 18032022
; 09 BRAMBILLA
; 04 ARES
; 08 19092002
; 01 M
; 00
; 10 BRMRSA02P19F205L
; 00
; 04 F205
; 00
; 00
; 04 E094

```

; 00
; 00

"E" codice "CR" lettura

"U" codice "CR" invio dopo notag

SE il lettore rileva una TESSERA TSE emette la stringa seguente.

"E" "BRMRSA02P19F205L" "U"

SE il lettore rileva una TESSERA MIFARE emette la stringa

02H-00H-07H-04H-(12H-34H-56H-78H)
(12-34-56-78 esempio codice letto)

INOUT RFID srl Via Milano,14/H 20064-Gorgonzola (Italy)
Phone:+39 02.95138.139 **Fax:**+39 02.95.158.694
Email: info@inoutsrl.it Web: www.inoutsrl.it